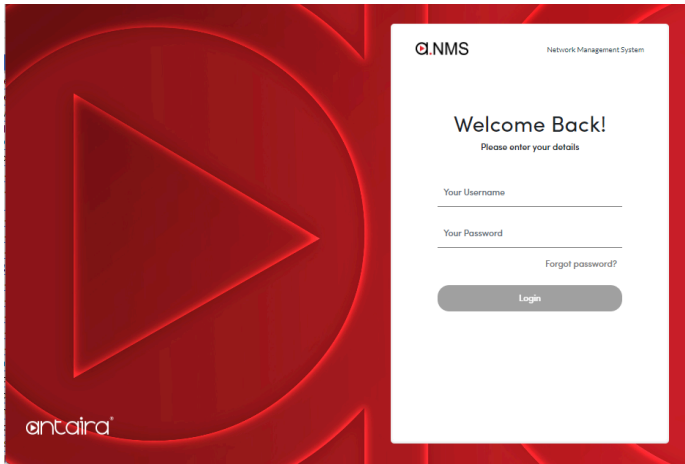


ANTAIRA NMS 2.0

Network Management System



FEATURES AND BENEFITS

- Dashboard for a quick overview
- Auto-discovery of supported devices
- Device lists and grouping
- Topology views
- Firmware management
- Configuration management
- Alarm and Notifications
- Trap management
- Syslog management
- User privileges management
- Troubleshooting features (Ping and TraceRoute)
- RESTful API
- Backup and restore
- sFlow collector and analysis*
- Zero-Touch Provisioning (ZTP)*

INTRODUCTION

The Antaira NMS system was designed to help manage large numbers of Antaira switches, specifically targeting firmware updates and configuration backup and restores. This management tool can monitor supported devices through a visual dashboard of SNMP traps and syslog information.

Antaira NMS is based on ISO FACPS, a framework defining five critical categories for network management.

Fault Management: The NMS Identifies, diagnoses, and resolves network problems. It detects issues such as device failures, link disruptions, and data transmission errors.

Configuration Management: This category configures network devices* for optimal performance and security. NMS tools enable remote configuration, access controls, and VLAN management. It also supports configuration file backup, restore, and file comparison to track configuration changes over time. The Zero-touch provisioning (ZTP)* streamlines network device deployment by automating configuration and eliminating manual on-site setup. This innovative approach empowers IT staff to achieve a wave of efficiency and security advantages. By automating configuration, ZTP minimizes errors, streamlines operations, and rapidly brings new devices online. This translates to significant cost savings, improved scalability for network growth, and a more consistent and secure network environment.

Accounting Management: Leveraging NMS to track resource usage and identify bottlenecks. NMS reports optimize resource allocation by providing insights into user activity, bandwidth performance and utilization, inventory management, and trap/alarm information.

Performance Management: provides a comprehensive view of your network. The dashboard delivers a network health overview, while the device list and detailed views offer in-depth insights into individual device performance. Key metrics like throughput, packet loss, and response times are readily available for troubleshooting and optimization purposes. Leveraging sFlow and its collectors unlocks a wealth of network traffic data, empowering administrators to optimize performance, troubleshoot issues efficiently, and enhance network security.*

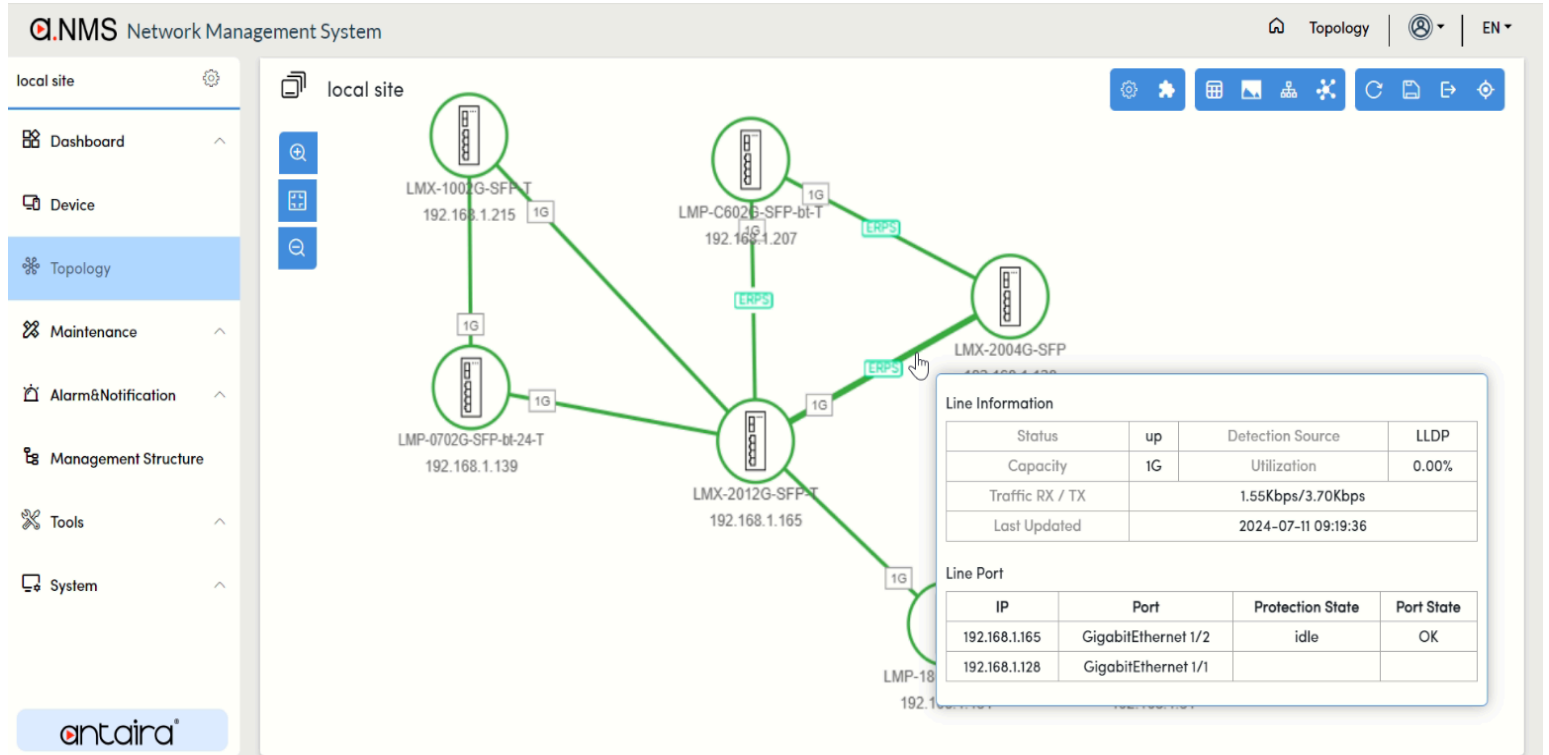
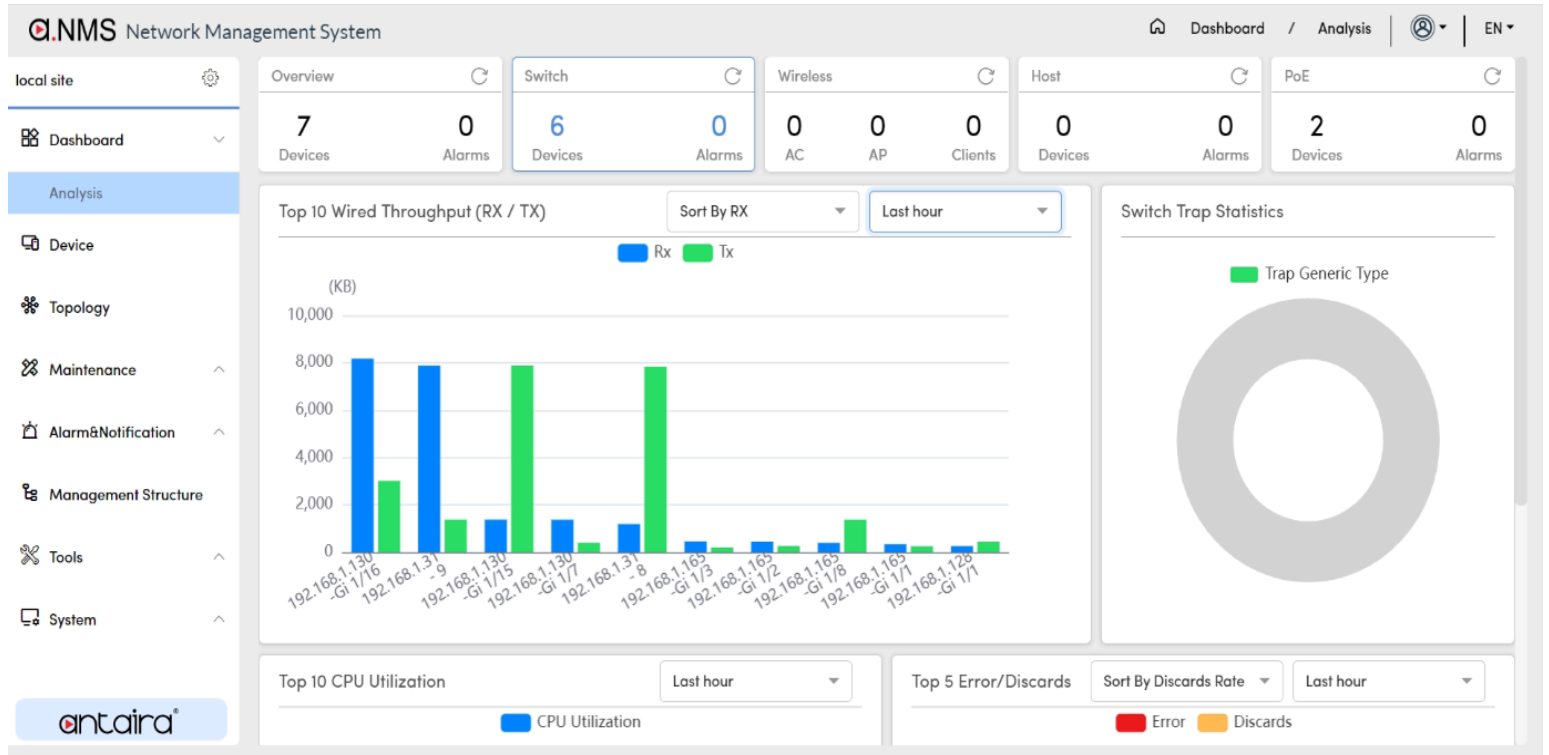
Security Management: NMS empowers administrators to establish a robust security posture by centralizing user creation, managing granular access privileges, and offering flexible local and external authentication*. This comprehensive approach strengthens network security by minimizing unauthorized access, streamlining user management, and enhancing auditability for improved compliance.

Antaira NMS empowers seamless integration with a powerful and versatile approach – RESTful APIs. This intuitive interface, built on web standards (HTTP verbs, JSON/XML), simplifies development and fosters interoperability across platforms and programming languages.

This flexibility extends to existing network management systems. Even if customers have their own NMS, they can leverage the strengths of Antaira NMS to manage Antaira devices through the RESTful API. This combination unlocks scalability, modularity for easy maintenance, and a discoverable interface, reducing development time for both parties.

* Features that will be supported in the future release

SCREENSHOTS



SPECIFICATIONS

Hardware Requirements	
CPU	Quad-core CPU or better
RAM	16 GB or higher
Disk Space	1 TB
OS	Windows 10 (64-bit) Windows 11 (64-bit) Windows Server 2016 (64-bit) Windows Server 2019 (64-bit) Windows Server 2022 (64-bit)

Supported Devices	
Part Number	OS version
LMP-0800G-24(-T)	6.0 or later
LMP-1002G-SFP(-T)	6.0 or later
LMP-1204G-SFP-bt-24(-T)	6.0 or later
LMP-1204G-SFP-bt(-T)	6.0 or later
LMP-1204G-SFP(-T)	6.0 or later
LMP-C602G-SFP-bt-V2(-T)	6.0 or later
LMX-0602-xx-V2(-T)	6.0 or later
LMX-0800(-T)	6.0 or later
LMX-0802-xx(-T)	6.0 or later
LMX-1002G-SFP(-T)	6.0 or later
LMX-1204G-SFP(-T)	6.0 or later
LMX-2004G-SFP(-T)	6.0 or later
LMX-2012-SFP(-T)	6.0 or later

ORDERING INFORMATION

Contact company name at sales@antaira.com / 714-671-9000 for version updates

© Antaira Technologies, LLC. All rights reserved. 202408
Specifications are subject to change without notice and without incurring any obligation.